

LOW POWER COAXIAL FIXED TERMINATION

Features:



Termination Type:	Coaxial Fixed
Average Power:	2W
Peak Power:	2kW
Frequency Range:	DC – 4GHz
Characteristic Impedance:	50Ω
Connectors:	N, 7/16
Temperature Range:	- 55°C to + 125°C

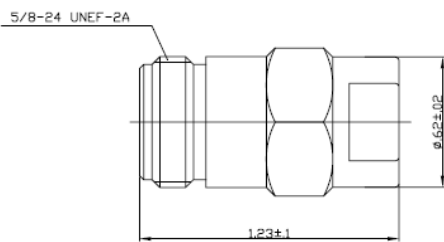
The ETN series is a family of low power coaxial terminations ideally suited for use as dummy loads in antenna and transmitter systems. The terminations can handle average power of 2W operating from DC – 4GHz with low VSWR.

Specifications:

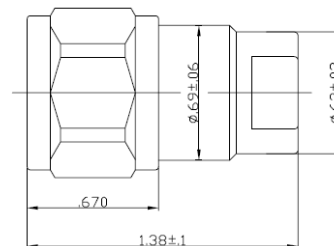
Model	VSWR [max] at 4GHz	Power (W)	
		Average	Peak
ETN-2500ANF	1.15	2	2k
ETN-2500ANM	1.15	2	2k
ETN-2500ADF	1.15	2	2k
ETN-2500ADM	1.15	2	2k

Outline:

ETN-2500ANF



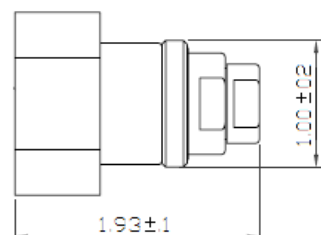
ETN-2500ANM



ETN-2500ADF



ETN-2500ADM



Specifications subject to change without notice

3048 SCOTT BOULEVARD, SANTA CLARA CA95054

TEL.NO.: 1-408-727 7127 • FAX NO.: 1-408-727 0827 • www.epxmicrowave.com

AUG 2009